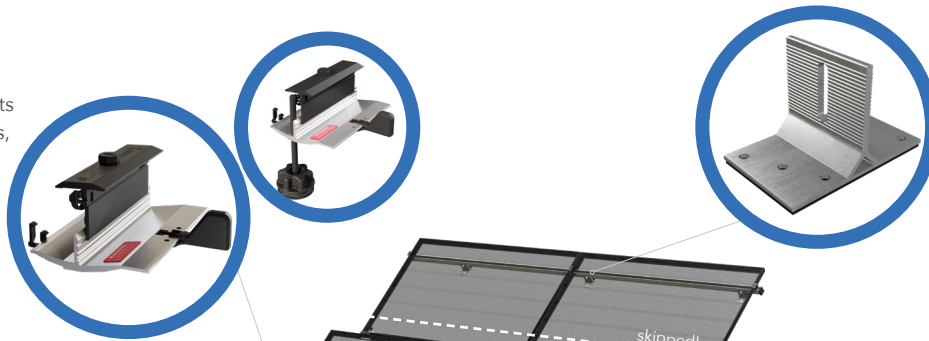


## Save Even More with Domestic Skiprail Clamps

Pegasus domestic module-to-module structural fastener changes the game. SkipRail contributes to bonus tax credit AND eliminates entire rows of rail, roof penetrations and mounts.

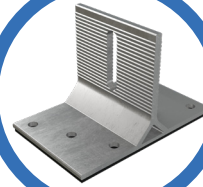
### Save Big with SkipRail

Eliminate entire rows of rail, including roof penetrations, mounts and clamps. For high snow regions, use SkipRail with Kickstand.



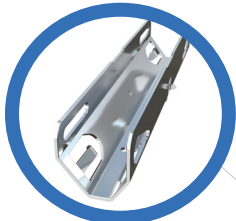
### Simple Deck Solution

The Butyl-Foot is a cost-effective solution to mount rails to composition shingle roofs.



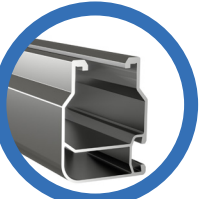
### Connect Rail Instantly

The Splice installs by hand and structurally connects and bonds rail sections, automatically.



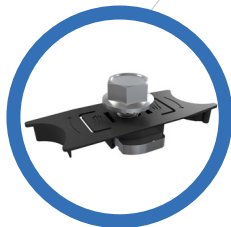
### Lifetime Wire Management

Open rail channel holds and protects wires. Clamps won't pinch wires after tightening.



### Easily Attach MLPE

The MLPE Mount secures and bonds micro-inverters and optimizers to the rail, allowing connectors and wires to easily flow in the channel below.



### One Clamp Anywhere

The Multi-Clamp works as mid- or end-clamp, and fits standard 30-40mm frames.



15.0%

+

3.5%

+

1.1%

=

19.6%

**MLPE Systems**

18.7%

+

4.4%

+

1.4%

=

24.5%

**String Systems**

Rail

Structural Fasteners

Racking Production

Total Contribution



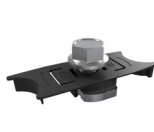
Rail



Splice



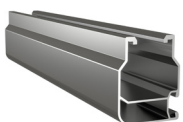
Multi-Clamp



MLPE Mount  
(when applicable)

If all components are domestically produced.

Pegasus domestic content can contribute 19.6% to 24.5% of the 45% domestic content bonus threshold.



Max Rail



SkipRail  
(optional)

### Try Domestic Skiprail & Save More!

With SkipRail, you can save 25% on rail and reduce roof penetrations and mounts by 15%

Information is based on the IRS Guidance Notice 2025-08

\*Pegasus does not provide tax, legal or accounting advice. This Material has been prepared for informational purposes only and is not intended to provide, and should not be relied on for, tax, legal or accounting advice. You should consult your own tax, legal and accounting advisors before engaging in any transaction.

## Domestic Rail SKUs

SKU	Description	Availability
PSR-M84-US	Pegasus Rail - Mill 84" - USA	In Stock
PSR-B84-US	Pegasus Rail - Black 84" - USA	In Stock
PSR-M168-US	Pegasus Rail - Mill 168" - USA	In Stock
PSR-B168-US	Pegasus Rail - Black 168" - USA	In Stock
PSR-MM84-US	Pegasus Max Rail - Mill 84" - USA	Upon Request
PSR-MB84-US	Pegasus Max Rail - Black 84" - USA	Upon Request
PSR-MM168-US	Pegasus Max Rail - Mill 168" - USA	Upon Request
PSR-MB168-US	Pegasus Max Rail - Black 168" - USA	Upon Request
PSR-MC84-US	Pegasus Max Rail - Clear 84" - USA	Upon Request
PSR-MC168-US	Pegasus Max Rail - Clear 168" - USA	Upon Request

## Domestic Structural Fastener SKUs

SKU	Description	Availability
PSR-MCZ-US	Pegasus - Multi-Clamp - Mid/End 30-40mm - Black Ano - USA	In Stock
PSR-MCM-US	Pegasus - Multi-Clamp - Mid/End 30-40mm - Mill Finish - USA	In Stock
PSR-SRC-US	Pegasus - SkipRail Clamp - USA	In Stock
PSR-SRCK-US	Pegasus - SkipRail Clamp w/ Kickstand - USA	In Stock
PSR-SPLS-US	Pegasus - Bonded Structural Splice - USA	In Stock
PSR-MLP-US	Pegasus - MLPE Mount - USA	In Stock

## Domestic Roof Attachment SKUs

SKU	Description	Availability
PBL-MDT-US	Pegasus - Butyl-Foot - Mill - Dovetail T-bolt - USA	In Stock
PBL-BDT-US	Pegasus - Butyl-Foot - Black - Dovetail T-bolt - USA	In Stock
PTX-DSB-SW-US	Pegasus Tile Scissor Mount - Deck Attach Kit for S&W-Tiles - USA	Upon Request
PTX-DSB-F-US	Pegasus Tile Scissor Mount - Deck Attach Kit for F-Tiles - USA	Upon Request

### Tax Credit Background\*

The Inflation Reduction Act set a 30% tax credit for solar installations while creating optional adders if projects can qualify with certain criteria. The domestic content adder (DCA) adds an additional 10% bonus tax credit if the current project can claim that there is 40% or more domestic content.

According to the initial guidance provided by the IRS, projects can safe harbor the DCA and follow pre-assigned values by product categories and project types to add up to the current 45% target. Domestic content racking from Pegasus can contribute to meet the criteria required to safe harbor the DCA. Consult your Lease/PPA provider or tax advisors to determine if your project qualifies.\*\*

For more information, contact your Pegasus Regional Sales Manager ([sales@pegasussolar.com](mailto:sales@pegasussolar.com))

Pegasus supports domestic content bonus tax credit requirements with domestic content racking components. Consult your Lease/PPA provider or tax advisors to determine if your project qualifies.

\*Pegasus does not provide tax, legal or accounting advice. This Material has been prepared for informational purposes only and is not intended to provide, and should not be relied on for, tax, legal or accounting advice. You should consult your own tax, legal and accounting advisors before engaging in any transaction.