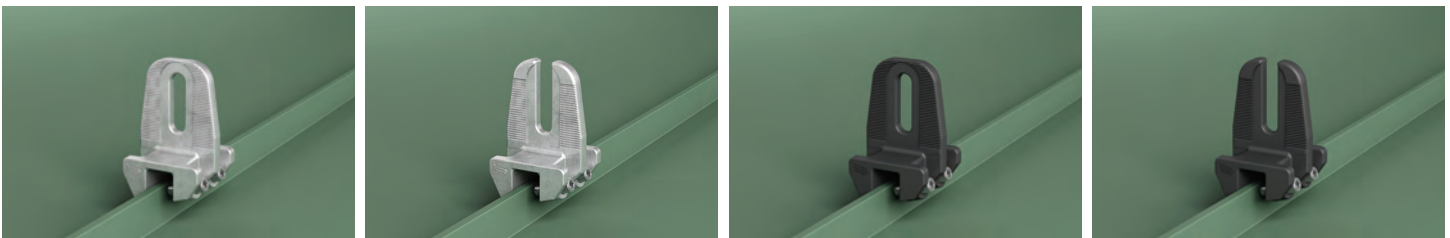
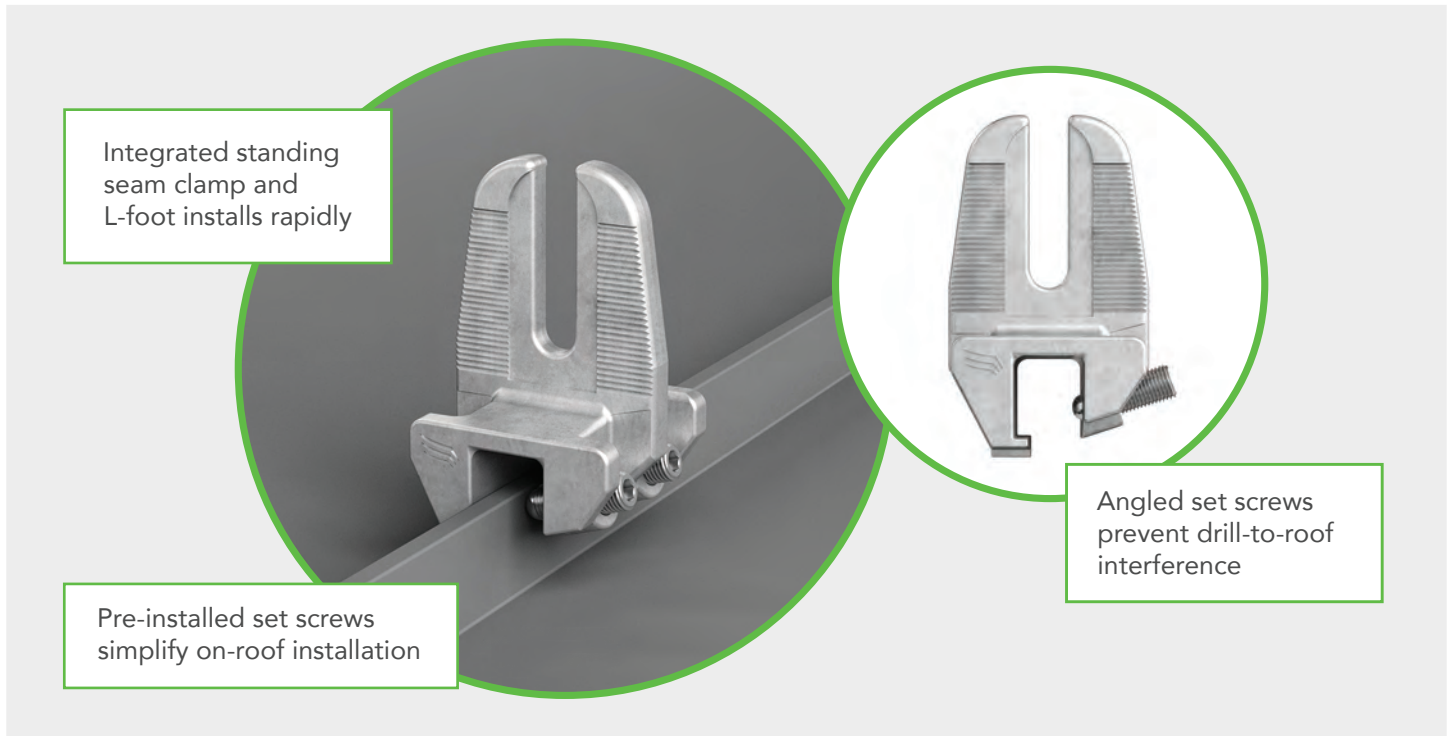


STANDING SEAM MOUNTS



SIMPLIFIED INSTALLATIONS

Pegasus Solar's Standing Seam Mounts are a cost effective, high-quality option for rail installations on metal roofs. Designed to last decades, the one-piece mount means there is simply nothing to fail.



25-year Warranty

Manufactured with advanced materials and coatings to outlast the roof itself



Universal

Compatible with 80% of single fold, double fold, and snap-lock standing seam profiles



Code Compliant

Fully IBC/CBC Code Compliant
Exceeds ASCE 7-10 & 7-16 Standards

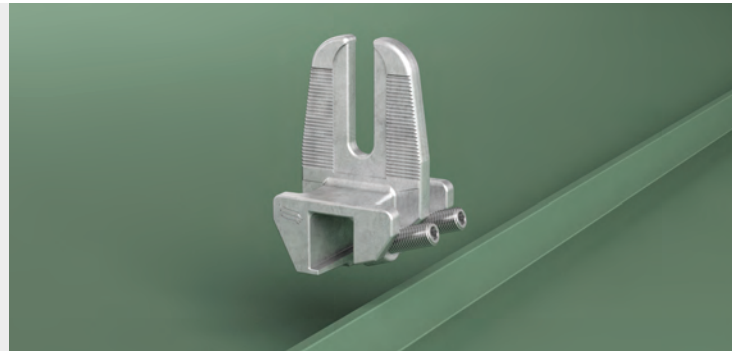


All-In-One Kit Packaging

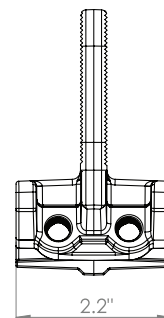
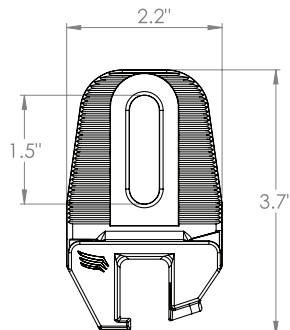
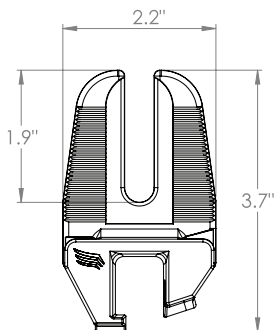
L-Feet and pre-installed SS set screws are included in each 50 pack

STANDING SEAM MOUNTS

1. Align mount over desired location on seam



2. Tighten set screws to 120 in-lbs of torque. Attach rail per rail manufacturer's instructions.



| Specifications | Standing Seam Mount Install Kits | | | | |
|---------------------|--|-----------|--------------|-------------|---|
| SKU | PSMS-CM00 | PSMS-UM00 | PSMS-CB00 | PSMS-UB00 | SPMS-CB0H |
| Finish | Mill L-Foot | | Black L-Foot | | |
| L-Foot Type | Closed Slot | Open Slot | Closed Slot | Closed Slot | Open Slot |
| Kit Contents | L-Foot, two 3/8" x 1" SS set screws | | | | L-Foot, two 3/8" x 1" SS set screws. M10 Hex Bolt |
| Roof Type | Most single fold, double fold, or snap-lock standing seam profiles | | | | |
| Certifications | IBC, ASCE/SEI 7-10 & 7-16 | | | | |
| Install Application | Railed Systems | | | | |
| Compatible Rail | Most | | | | |
| L-Foot Material | Aluminum | | | | |
| Kit Quantity | 50 | | | | |
| Boxes per Pallet | 40 | | | | |

Patents Pending. All rights reserved. © 2019 Pegasus Solar Inc.